



Lodges & Caravans

FOR SALE



Maesmawr Farm Resort, Prestige Navigator Lodge Moat Lane, Caersws,
SV17 5SE
£130,000

Prestige Navigator Lodge Moat Lane, Caersws SY17 5SE

Owner: Mr&mrs Darren & Michelle Leese

Prestige Navigator Lodge – Maesmawr Farm Resort

Make & Model: Prestige Navigator (2018) Colour: Classic Brown Size: 40ft x 20ft Bedrooms: 2 Condition: New Location: Plot TL11 – Redwood

Step into comfort and countryside charm with this spacious Prestige Navigator lodge, beautifully positioned at the welcoming Maesmawr Farm Resort. With its generous proportions and thoughtful design, this lodge is perfect for couples, families, or those who love to entertain while enjoying the freedom of a 12-month holiday park lifestyle.

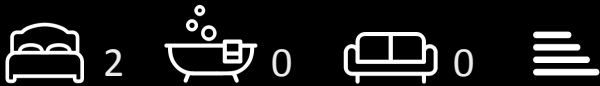
Lifestyle Highlights

Expansive layout: At 40ft x 20ft, the lodge offers exceptional space for relaxation and gatherings.

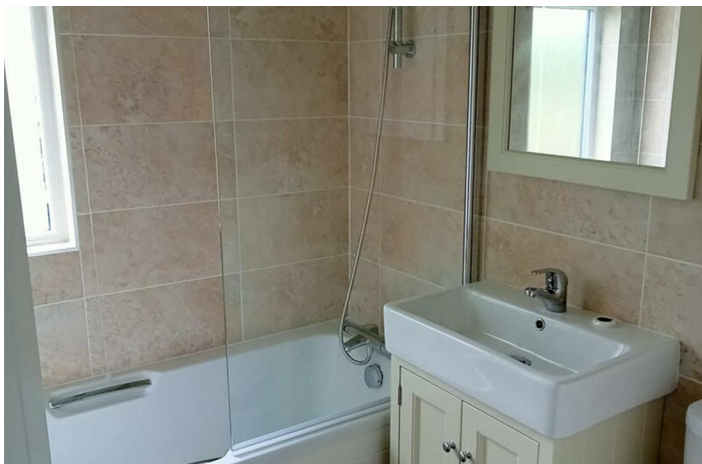
Two bedrooms: Ideal for family holidays or welcoming guests, with comfort and privacy built in.

Prestige craftsmanship: The Navigator model is known for its stylish finishes and practical layout, blending luxury with ease of living.

New condition: Ready to enjoy immediately, with insurance cover in place for added peace of mind.



Council Tax Band: Exempt





Directions

Viewings

Viewings by arrangement only. Call 07500 874938 to make an appointment.

EPC Rating:

Energy Efficiency Rating		
	Current	Potential
Very energy efficient - lower running costs		
(92 plus) A		
(81-91) B		
(69-80) C		
(55-68) D		
(39-54) E		
(21-38) F		
(1-20) G		
Not energy efficient - higher running costs		
England & Wales	EU Directive 2002/91/EC	